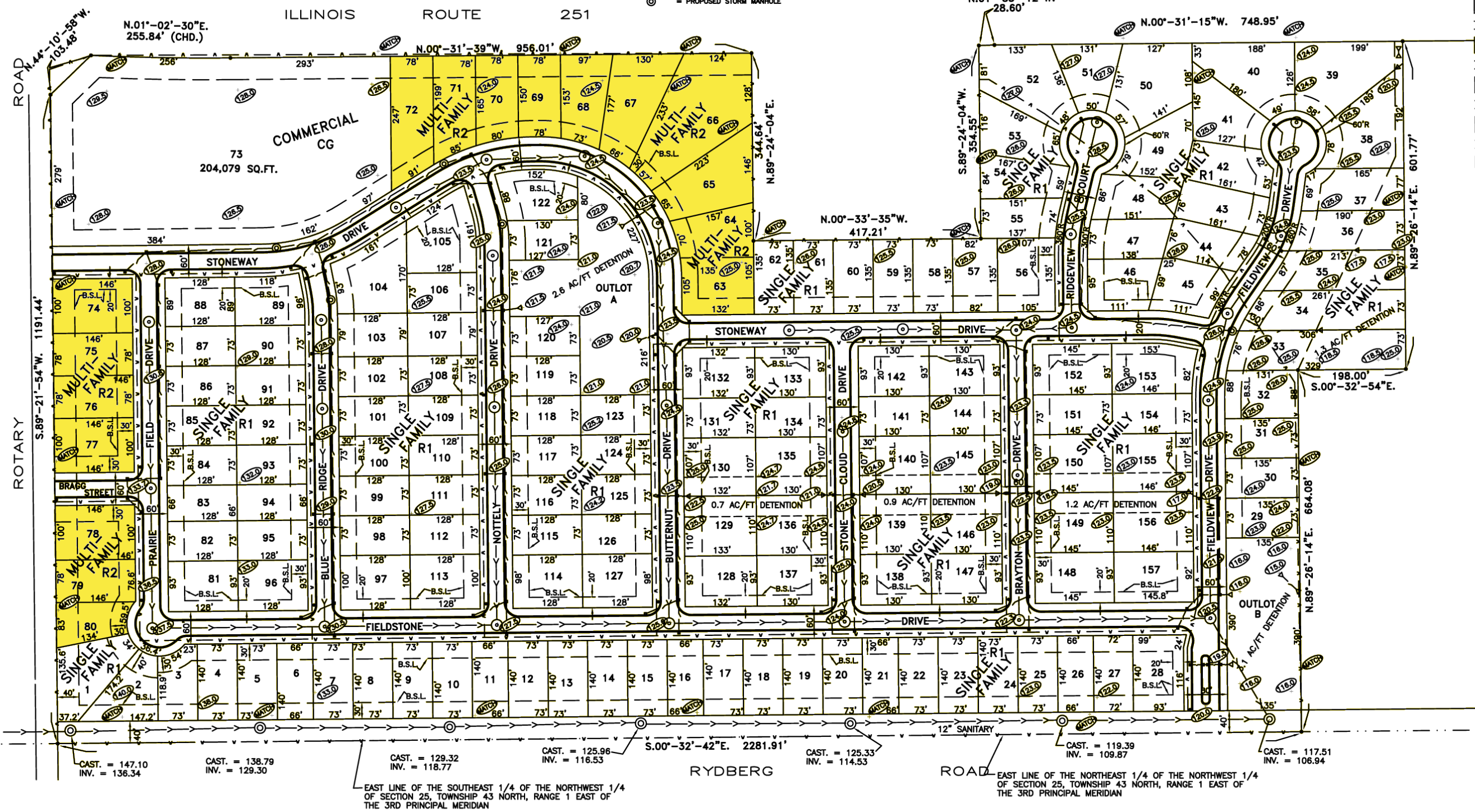


- KEY**
- - - FENCE LINE
  - - - EXISTING 12" SANITARY SEWER
  - ⊙ EXISTING SANITARY MANHOLE
  - - - PROPOSED SANITARY SEWER
  - ⊙ PROPOSED SANITARY MANHOLE
  - - - PROPOSED STORM SEWER
  - ⊙ PROPOSED STORM MANHOLE
  - PROPOSED FINISHED GRADE
  - - - EXISTING CONTOUR LINE
  - PROPOSED CURB INLET
  - ▽ PROPOSED END SECTION
  - ▲ PROPOSED FIRE HYDRANT
  - - - PROPOSED WATER MAIN



NORTH LINE OF THE NORTHWEST 1/4 OF SECTION 25, TOWNSHIP 43 NORTH, RANGE 1 EAST OF THE 3RD PRINCIPAL MERIDIAN

**NOTES:**  
 TOTAL LOTS = 159  
 COMMERCIAL LOTS = 1  
 RESIDENTIAL LOTS = 156  
 OUTLOTS = 2  
 APPROXIMATE TOTAL LINEAL FEET OF STREET = 9,312  
 NOTE: AT THIS TIME THERE IS NO EXISTING WATER MAIN IN EITHER RYBERG ROAD OR ROTARY ROAD. WATER MAIN CONNECTION POINTS MAY BE CHANGED AT SUCH TIME AS THESE OFF-SITE WATER MAINS ARE CONSTRUCTED.

**NOTE:**  
 LOTS 1 THROUGH 62 AND LOTS 81 THROUGH 157 ARE SINGLE FAMILY LOTS (R1).  
 LOTS 63 THROUGH 72 AND LOTS 74 THROUGH 80 ARE MULTI-FAMILY LOTS (R2).  
 LOT 73 IS A COMMERCIAL LOT (CG).  
 OUTLOT A AND OUTLOT B ARE STORM WATER DETENTION FACILITIES AND ARE NON-BUILDABLE AND NON-FILLABLE.

TOTAL AREA = 65.337 ACRES

**ZONING EXHIBIT FOR LOOKOUT PRESERVE SUBDIVISION**  
 BEING PART OF THE NORTHWEST QUARTER OF SECTION 25, TOWNSHIP 43 NORTH, RANGE 1 EAST OF THE THIRD PRINCIPAL MERIDIAN.  
 NEW MILFORD, WINNEBAGO COUNTY, ILLINOIS

Owner:  
 William Charles Investments  
 1401 North Second Street  
 Rockford, IL 61107

HERITAGE ENGINEERING, LTD. P.O. BOX 5145 ROCKFORD, ILLINOIS 61125 815/225-6282 FAX 815/395-5715		345 EXECUTIVE PROMY, SUITE M1 ROCKFORD, ILLINOIS 61107	
DATE: 03-09-07	SCALE: 1" = 100'	COMP. BY: SM	CHECKED BY: J.P.M.
ORDER NO. 4098	SHEET 1 OF 1	DRAWING NO. 4098ZONING	REV.